

ROUTER CAUSED DEATH

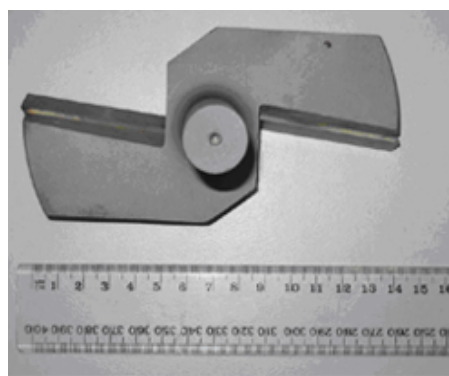
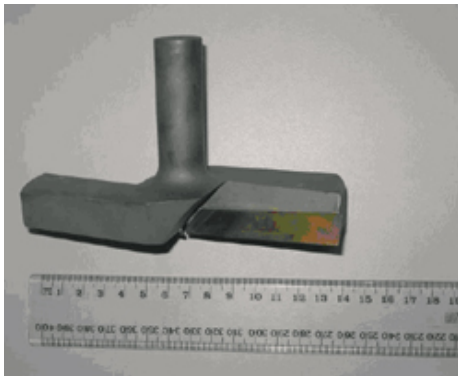
The purpose of this alert is to advise industry of a recent incident where a worker was killed using a router to complete a job.

Background

Routers are a common item of fixed plant used in a variety of wood machining settings and workplaces. The worker who died was operating an industrial router at a cabinet-making factory when the bit disintegrated and a piece of metal hit her in the chest.

The contributing factors that led to this incident included:

- use of an inappropriate bit for the tool—in this case, a bit with wings too large for the shank;
- use of a bit with a shank not long enough to be properly grasped in the collet;
- the tool not being marked with the maximum permissible speed;
- the tool not being balanced before use.



No etching of the maximum speed on the side of the bit. Router bit's wings are too large for the shank

Control Measures

Manufacturers, users of router bits, and their employers should be aware of the safety requirements involved in the use of routers.

- **Ensure that the maximum permissible speed is clearly marked on the tool (preferably by etching).**
- **Ensure that the bit is properly balanced prior to being put on the market or into use.**
- **Tools should only be sharpened by a competent person or organisation and regular checks of collets should be carried out to ensure they hold router bits firmly.**
- **Under no circumstances should local modifications be made to bits or collets to allow the use of non-compatible components.**
- **Staff should be trained and supervised in using these pieces of plant.**

Further Information

For more information on occupational health and safety, go to WorkSafe's website:

www.worksafe.vic.gov.au.